

# Oljeprofil Sollentuna Bowlinghall

# Stubblehagsroad

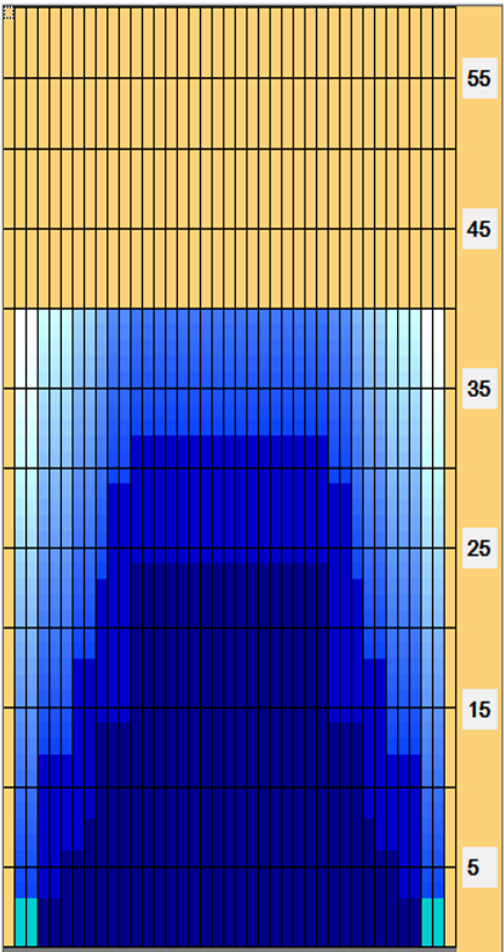
Oil Per Board: 50  $\mu$ L Oil Pattern Distance: 40 Feet Volume Oil Total: 23.55 mL Total Boards Crossed: 471 Boards

Forward Oil Total: 13.95 mL  
 Forward Boards Crossed: 279 Boards

Reverse Oil Total: 9.6 mL  
 Reverse Boards Crossed: 192 Boards

Screen #	Volume Per Board: 50 $\mu$ L			Forward Brand			1st Buff	2nd Buff	Oil Travel Distance
	Left	Right	# Loads or	Travel	Beginning	Ending	# Boards	Total	Total
01F	2	2	3	14.00	0.00	3.90	37	111	5550
02F	6	6	1	18.00	3.90	6.40	29	29	1450
03F	8	8	1	18.00	6.40	8.90	25	25	1250
04F	9	9	2	18.00	8.90	14.00	23	46	2300
05F	12	12	3	18.00	14.00	21.60	17	51	2550
06F	12	12	1	22.00	21.60	24.70	17	17	850
07F	2	2	0	26.00	24.70	40.00			
08F									
09F									
10F									
11F									
12F									
13F									
14F									
15F									
Total # Boards Crossed / mL on FWD							279	13.95	
01R	2	2	0	26.00		32.00			
02R	12	12	1	22.00	32.00	28.90	17	17	850
03R	10	10	2	22.00	28.90	22.70	21	42	2100
04R	9	9	2	18.00	22.70	17.60	23	46	2300
05R	7	7	2	18.00	17.60	12.50	27	54	2700
06R	4	4	1	18.00	12.50	10.00	33	33	1650
07R	2	2	0	18.00	10.00	0.00			
08R									
09R									
10R									
11R									
12R									
13R									
14R									
15R									
Total # Boards Crossed / mL on REV							192	9.6	
Total # Boards / mL FWD and REV							471	23.55	

Forward Oil  
 Reverse Oil  
 Combined Oil  
 Buff Area



Arrow Zone Ratio	Item	2-6L:16L-20	6-10L:16-20	11-15L:16L-20	16L-20:20-16R	16L-20:20-16R	20-16R:15-11R	20-16R:10-6R	20-16R:5-2R
	Ul Arrow	175	480	900	950	950	900	480	175
	Zone Ratio	5.43	2.07	1.06	1	1	1.06	2.07	5.43
Track Zone Ratio	Item	3L-7L:18L-18R	8L-12L:18L-18R	13L-17L:18L-18R	18L-18R:17R-13R	18L-18R:12R-8R	18L-18R:7R-3R		
	Description	Outside Track:Middle	Middle Track:Middle	Inside Track:Middle	Middle: Inside Track	Middle:Middle Track	Middle:Outside Track		
	Track Zone Ratio	4.13	1.42	1	1	1.42	4.13		

